

USA OVER 50s HOUSING

WEEKLY NEWS

RETIREMENT HOUSING • NURSING HOMES • HOME CARE • DEMENTIA • CCRC

THURSDAY DECEMBER 22, 2011

USA EDITION

HEALTHCARE PRICES CONTINUE TO RISE IN NOVEMBER/ UPWARD COST PRESSURES TO CONTINUE INTO NEW YEAR

WASHINGTON: U.S. healthcare prices increased in November 2011, rising 0.4 percent over October prices, according to the federal Bureau of Labor Statistics.

The BLS' Producer Price Indices measure average changes in selling prices received by domestic producers for their output. The November PPI report indicated that prices across the range of healthcare industries were 2.0 per cent higher than a year ago.

The PPI translates into actual or expected reimbursement for a

sample of treatments or services.

In the October-through-November period, prices received by physician offices actually fell 0.2 per cent, while hospital prices increased 0.6 per cent. The PPI for dentist offices also experienced a bump, increasing by 0.5 per cent.

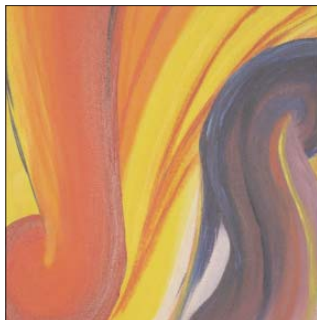
The PPIs of some other key healthcare sectors were mixed last month. Prices received by home healthcare services fell 0.5 per cent from October through November. In contrast, prices in the medical and diagnostic laboratory sector increased 0.1 per cent, as did prices received by residential mental retardation facilities.

The PPI for blood and organ banks rose 0.1 per cent across the month, while the PPI at nursing care facilities dropped 0.2 per cent.

Comparing November 2010 to November 2011, overall healthcare PPIs rose 2.0 per cent.

For instance, overall hospital prices were 2.5 per cent higher in November than a year ago,

(Continued Page 2)



CLOVER MANAGEMENT SET TO BUILD 12TH SENIORS HOUSING PROJECT IN BUFFALO

CLARENCE, N.Y.: The rising demand for senior housing apartments is serving as the backdrop for Clover Management's newest project.

The Amherst-based developer is working with Town of Clarence officials on a proposal to construct a 131-unit, multi-story senior housing project on Roll Road near Transit Road. Clover's project, which would be its first in Clarence. The project carries a \$10 million development price tag.

Ironically, Clover's project is set for the same parcel where Wegmans Food Markets considered building a supermarket, but those plans

(Continued Page 5)

Medicaid cuts have gone far too deep

NEWARK, N.J.: Nursing home operators in New Jersey girded themselves for a little belt tightening this year, but some say they're being squeezed too much.

Nursing care providers were expecting a three per cent reduction in Medicaid reimbursements, but some facilities in the Garden State say they're facing an eight per cent cut.

In 2010, New Jersey revamped its payment system to financially reward centers that care for sicker patients. Paul Bach, the Central Area president of Genesis Health Care, says the 2011 cuts were configured incorrectly for those facilities.

"Our system allows for providers with heavier-care residents to receive higher levels of reimbursement, and the manner in which the reduction in payments were made disproportionately penalized those providers that have the sickest patients residing in its facilities," Bach said.

Genesis has facilities across New Jersey, including locations in Pennsauken, Voorhees and Burlington. It is asking Gov. Chris Christie and lawmakers to review the math used to calculate the new reimbursement rates.

By email a spokeswoman for the New Jersey Department of Health and Senior Services said Medicaid funding for nursing homes represents nearly half of

(Continued Page 4)



Nursing home operator charged with fraud

BUFFALO, N.Y.: The owner of two area nursing homes is facing federal charges of wire fraud and making false statements to law enforcement officials.

Marc Irwin Korn of East Amherst was charged today in a five-count indictment by a federal grand jury in Buffalo, according to U.S. Attorney William Hochul Jr. The charges carry a maximum penalty of 20 years in prison, a fine of \$250,000 or both.

Korn is owner of Senior Associates LLC of Amherst, which operated the Fairchild Manor Nursing Home and Rehabilitation Center in Lewiston and the Batavia Nursing Home and Rehabilitation Center. Both sites had faced financial difficulties.

The 80-bed Fairchild Manor was shut down in recent months, though state Health Department

(Continued Page 2)

★ An Ohio firm has sold a South Scranton nursing home to a Delaware corporation for \$6.5 million. Scranton Real Estate Group LLC sold the Scranton Health Care Center to McCarthy Street Property LLC. Scranton Health Care Center is a 45-bed facility at 2933 McCarthy St.

★ A long-term care industry group wants a new law in Kentucky that would create medical review panels to evaluate potential lawsuits against nursing homes, personal care homes and some facilities for the intellectually and developmentally disabled.

(Continued Page 4)

★ This will be the final edition of USA Over-50s Housing Weekly News for 2011. The next edition will be published on Thursday 26 January 2012. The Editor and staff wish you a happy and content Christmas and an improved economic outlook in 2012. Email story leads to sales@seniorshousing.us



NEWS BRIEFS

Nursing home operator charged with fraud

(From Page 1)

officials confirmed the closure had been underway for some time and was unrelated to Korn's legal troubles. The DOH was also working on a receivership plan for Batavia, a 62-bed residential, healthcare facility.

The DOH said no action has been taken on receivership in Batavia. Instead, the department is receiving daily reports from the nursing home administrator, and staff do visits at least weekly to monitor for health and safety issues. And though there were reports earlier this year about

(Continued Page 3)

Nursing home developers present plans to council

GLASTONBURY, CT: The Glastonbury Town Council and Planning and Zoning Commission held a joint public hearing on a proposed 135-bed senior assisted-living facility, proposed for a 13-acre parcel of town-owned land on Western Boulevard.

Hearth Management – the firm proposing the facility – is still a “mom and pop,” according to Dan

Suits (pictured above), Hearth's COO, who added that he prides himself on Hearth being a good neighbor to the communities in which it builds.

The plans call for a two-part building – a three story, 90-unit assisted living section, and a single-story, 41-unit Alzheimer's and dementia section (known as Keepsake Village).

RFP for Baron's South seniors' complex issued

WESTPORT, CT: The town is moving forward with the next step in possible development of a residential and healthcare complex for seniors on the Baron's South property by formally solic-

iting bids from developers.

The first phase of the development on the town-owned land, as outlined in the RFP, would consist of up to 100 one and two-bedroom rental units.

NEWS BRIEFS

Healthcare prices continue to rise in November/upward cost pressures to continue into New Year

(From Page 1)

while physician office prices were 1.2 per cent higher. Nursing care facility prices increased 0.9 per cent from November 2010 to November 2011 but prices for home healthcare services were flat across the 12-month period.

The PPI for medical and diagnostic laboratories increased 0.5 per cent from November 2010 to November 2011, while residential mental retardation facilities saw prices rise 2.3 per

(Continued Page 3)

The Future of Construction is Structural Light Steel Framing



- Fast Turn-key Construction
- Healthy, Safe Environment
- ULC Approved
- Sustainable, Green
- Market Leader
- In-house Structural Engineering
- Over 1,000,000 sq. ft. installed

Contact for free info pack
sales@kmlbuildingsolutions.com
 905-832-9286 x279



Nursing home operator charged with fraud

(From Page 2)
 missed payrolls, there have been no new reports about issues with paychecks, says Peter Constan-takes, a DOH spokesman. The department is also keeping abreast of Korn's legal issues.

Healthcare prices continue to rise in November/upward cost pressures to continue into New Year

(From Page 2)
 cent through the year. Blood and organ banks experienced a PPI increase of 1.2 per cent in the same period.

The PPIs for healthcare industry segments measure changes in actual or expected reimbursement received for services across the full range of payer types. This includes the negotiated contract rate from the payer plus any portion expected to be paid by the patient.

Supervisors approve Turnberry master plan

FERGUSON TOWNSHIP, PA: After about 90 minutes of continued discussion and questions about the 891-unit Turnberry traditional town development, the Board of Supervisors Monday voted 4-1 to approve the overall master plan.

Bob Heinsohn voiced the

only opposition to the development, which is planned for the Corl/Circleville Farm site between Circleville Road and Blue Course Drive, and will include single and multi-family units, seniors duplexes and apartments. Ninety-one units will classify as workforce housing.

Company breaks ground on seniors project

MIAMI, FL: A Miami-based development firm is breaking ground on Wilmington's newest affordable housing development senior residents over the age of 55.

Carlisle Development Group, a development firm that specializes in the construction of tax credit residential communities across the Southeast U.S., has partnered with Wilmington and the North Carolina Housing Finance Agency in the construction of a \$8 million residential community called Lake Ridge Commons.

**EXPERT
 IN POSITIONING
 YOUR LAND
 IN OVER 50s
 HOUSING
 IN ANY
 COUNTRY**

DETAILS

**ADVERTISE
 80,000 READERS
 USA OVER 50s HOUSING
 WEEKLY NEWS**

email: sales@seniorshousing.us

FOR
**ADVERTISING
 80,260
 readers**

EMAIL
sales@seniorshousing.us



(From Page 1)

Legislation has not been filed for the 2012 General Assembly, but an attorney's organization and a nursing home reform advocacy group are already opposing the proposal supported by the Kentucky Association of Health Care Facilities.

Medicaid cuts have gone far too deep

(From Page 1)

the department's overall budget so it's difficult to lower costs without affecting those facilities.

Paul Langevin, who leads the Health Care Association of New Jersey, said most people don't plan for nursing home care.

"Everybody thinks the Government pays for it, and they do, but they basically don't pay for it until you impoverish yourself," Langevin said.

Members of Langevin's group operate long-term care facilities across the state.

Supportive housing apartments to open in January

MANCHESTER, CT: The 20-unit development at 487 Center Street will combine long-term affordable housing for residents with special needs with a breadth of support services.

State and local dignitaries, including Gov. Dannel P. Malloy and Mayor Leo V. Diana, were on hand Monday to cut the rib-

bon at the new supportive housing development on Center Street.

The 27,000 sq ft development located at 487 Center Street, known as the Center Street Supportive Housing Apartments, will combine permanent and affordable housing for individuals of low income or with special needs.

District moves ahead with new care facility plan

ELGIN, OR: In spite of multiple setbacks, Willowa County Health Care District board members unanimously reiterated their support this week for going ahead with the new residential care facility.

The project has faced numerous challenges. They include the initial failure of the hospital levy measure before it ultimately passed on a special ballot last spring, and a grant that turned out to be a scam perpetrated by an individual with the state Department of Human Services.

**ADVERTISE
80,000 READERS**

**USA OVER 50s HOUSING
WEEKLY NEWS**

email: sales@seniorshousing.us

SEMINAR*

+50s HOUSING TRENDS

*Restricted to 15 participants

**WHERE WILL HOUSING
FOR OVER 50s TREND
AIMED AT**

- ✓ Developers
- ✓ Architects
- ✓ Financiers
- ✓ Retirement Village Operators
- ✓ Care Home Proprietors

**WORLD
AUTHORITY**

• CHICAGO •
MAY 2012

[More details click here](#)

FOR

**ADVERTISING
80,260
readers**

EMAIL

sales@seniorshousing.us



EXPERT
IN POSITIONING
YOUR LAND
IN OVER 50s
HOUSING
IN ANY
COUNTRY

DETAILS

NEWS BRIEFS

Clover Management set to build 12th seniors housing project in Buffalo

(From Page 1)
 died because of stiff neighborhood opposition. Wegmans has since renovated its existing Transit Road store in Amherst.

Jewish Home Lifecare to revamp Manhattan project

NEW YORK, N.Y.: Plans for a pioneering nursing home designed to offer senior citizens greater independence are poised to move forward now that a land swap on the Upper West Side has closed.

Jewish Home Lifecare will build a 24-story nursing home at 97th Street between Amsterdam

and Columbus avenues, which will use a model for elder care that combines new approaches to design and staffing.

The model eschews long institutional corridors and shared rooms, in favor of small pods with private rooms that are designed to feel more like homes.

FOR
ADVERTISING
80,260
readers
 EMAIL
 sales@seniorshousing.us

Future Housing Trends *in*

• Nursing Home • Dementia • Retirement Village

- ✓ World authority on Over 50s Housing Markets
- ✓ Detailed analysis of 100+ New Trends impacting on Housing Choices of Over 50s
- ✓ 150 pages of Research Material provided
- ✓ All trends have application in USA/CAN Markets
- ✓ Sheltered Housing / Supported Housing Markets covered as well as Higher Income Quartiles
- ✓ Thought Provoking / Stimulating / Engaging / Informative

**20 Max Permitted in Each Session*

Markets in the USA / CAN
FULL DAY BRIEFINGS 9:30-4pm Each Day

TORONTO Mon 21 May 2012

CHICAGO Fri 25 May 2012

VANCOUVER Wed 23 May 2012

BOOKING FORMS
CLICK HERE

PHONE: +1 310 860 5116
 FAX: +1 323 908 6218
 EMAIL: sales@seniorshousing.us
 WEB: www.seniorshousing.us